



WINDOWS THAT BEAT THE HEAT

100 Series windows are uniquely suited to hold up in the intense heat of the Southwest and keep your homes looking incredible year after year. This is thanks to their revolutionary Fibrex® material, which is 2X stronger than vinyl and blocks thermal transfer nearly 700X better than aluminum. In fact, contractors agree that windows made of Andersen's Fibrex® composite material outperform vinyl windows.* Find the best fit for your replacement projects below.



FLUSH FIN **NEW!**



- Easy installation without disturbing the existing stucco, saving time and money
- 1 5/8" width fin to replicate the look of exterior trim
- Trimmable fin with guide grooves at 1/2" and 1"
- Dark colors available inside and out
- Assembled in Arizona



INSERT



- Easy installation without disturbing the existing interior trim, saving time and money
- Exterior accessory kerf allow for convenient finishing
- Dark colors available inside and out
- Andersen installation accessories offer a clean transition



*2022 Andersen brand survey of U.S. contractors.
 **When 100 Series products were tested against five leading competitors' painted vinyl window products.

100 SERIES

PRODUCT OPTIONS

100 Series products feature interiors with a premium matte finish for an attractive appearance, and exteriors that never need painting and won't fade, flake, blister or peel,* even in extreme cold or heat.

EXTERIOR COLORS



INTERIOR COLORS



**Products with dark bronze, black and Sandtone interiors have matching exteriors.

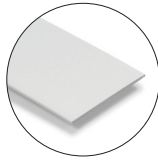
INSTALLATION ACCESSORIES[†]

FLUSH FIN

Flat & Curved Interior Trim

Interior trim for a fast and easy way to cover the old window frame.

- Pre-scored for easy sizing
- 3/4" adhesive strip for secure positioning
- Flat trim available in 12' lengths, curved trim will come cut to size of unit
- Available in white, Sandtone, dark bronze and black



INSERT

Frame & Sill Extender

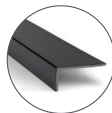
Fits in unit accessory kerf to hide the gap between the new unit and the existing frame.

Precut to fit 14° sill slope and can be cut to fit slope or length needed.

Available in 1" PVC and 2" Fibrex® material options.



Profile view of 1" PVC trim strip in white



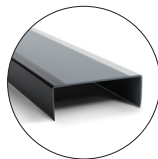
Profile view of 2" Fibrex material frame extender in black



Head Expander

Assists in filling the opening when doing an interior installation. Available in limited single-tone and two-tone colors.

- Single-tone: white, dark bronze and black
- Two-tone: black/white & dark bronze/white



Shown in black/white

INSTALLATION MATERIALS

Sealant

Excellent long-term durability and adhesion to Andersen® product substrates and common building materials.

Installation Foam

A minimal expanding low-pressure build foam that remains soft and pliable.

Foam Backer Rod

Backer rod helps provide an air seal around the frame. 100' roll

Flat Shims

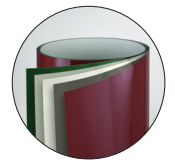
Flat hanging shims help with a secure installation. Box of 248

Installation Screws

Properly-sized installation screws are provided with each insert and flush fin unit.

Color-Matched Coil

Fits in unit accessory kerf to wrap the existing wood window trim. Cut and form profile needed at the job site. 24" x 50' roll



For more information, visit andersenwindows.com/100series

*Visit andersenwindows.com/warranty for details. †Sold separately.

"Andersen" and all other marks where denoted are trademarks of Andersen Corporation.

©2023 Andersen Corporation. All rights reserved. 2/23