

# MARVIN COASTAL COMPLETE

WINDOWS AND DOORS



**MARVIN**   
Windows and Doors  
Built around you.®





MARVIN COASTAL COMPLETE

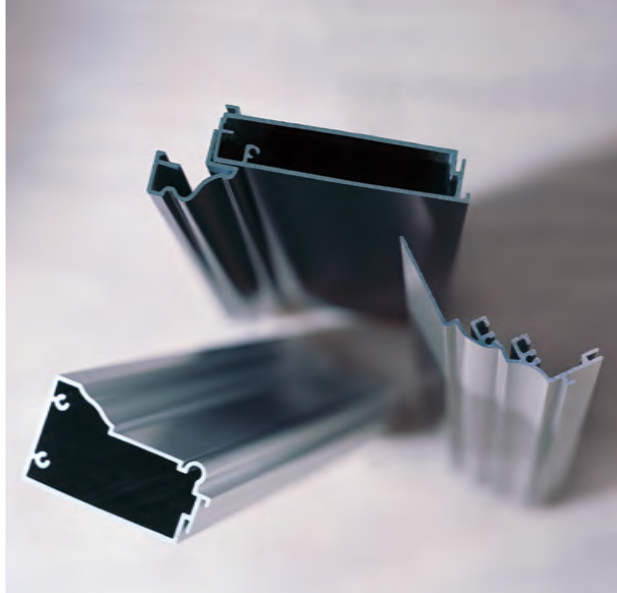
WINDOWS AND DOORS THAT  
MAKE LIVING ON THE COAST  
EVEN MORE BEAUTIFUL.

Stunning views. The smell of the sea. Beautiful beaches at your doorstep. Living on the coast is unlike living anywhere else. With all the beauty and serenity, however, comes the fierce unpredictability of Mother Nature. Finally, there are windows and doors built with these two opposing realities in mind. Thanks to Marvin® Windows and Doors' superior exterior cladding and finish, coastal residents no longer have to sacrifice performance for beauty. No matter how nasty the weather gets, the view will remain as beautiful as ever.

CONTENTS

Performance .....	3	Hardware .....	9
Exterior Finishes .....	5	StormPlus® .....	11
Interior Finishes .....	7	Specifications .....	21





MARVIN PERFORMANCE

## GIVE UGLY WEATHER SOMETHING BEAUTIFUL TO LOOK AT.



### BETTER CLADDING MEANS BETTER FINISH

Marvin® is one of the few window manufacturers to use high-quality extruded aluminum cladding as our standard. The standard finish coating for Marvin meets AAMA 2605 for extruded aluminum – the industry’s highest standard. The AAMA 2605 standard for roll-form aluminum does not measure up – requiring only a 0.9 mil finish thickness, instead of the 25% thicker, 1.2 mil, coating required to meet the AAMA 2605 standard for extruded aluminum.

extruded  
aluminum



VS.



roll-form  
aluminum

### IT'S WHAT YOU DON'T SEE THAT REALLY COUNTS

Our durable hardware is engineered to work seamlessly with our windows and doors. Coastal products feature corrosion resistant exterior fasteners including staples, nails and screws.

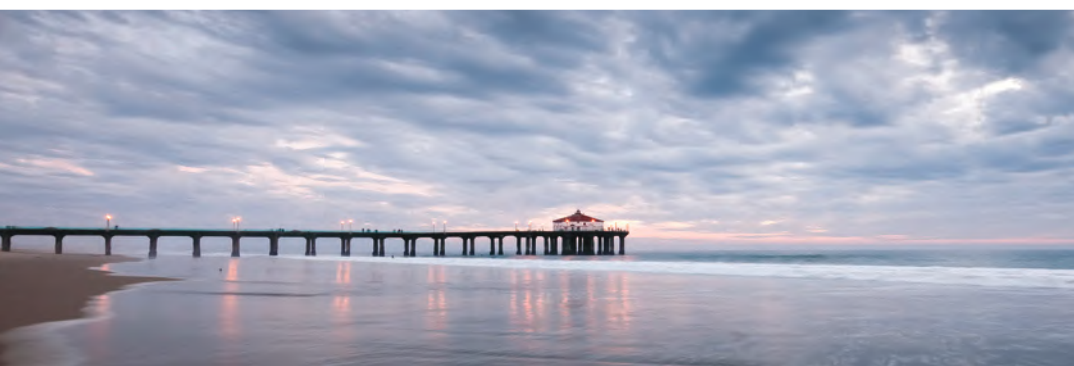


### BETTER CHEMISTRY MEANS BETTER DURABILITY

Coastal windows must be able to stand up to flying debris, gale force high winds, driving rain, salt spray, and blazing sun. This is why all Marvin extruded aluminum clad products feature an extremely durable Fluoropolymer paint finish with 70% PVDF. This coating system offers outstanding resistance to humidity, color change, chalk, gloss loss and chemicals. AAMA 2605 requires multi-step pretreatments for the best long-term adhesion of the coating to the metal. And Marvin’s clad extrusions are formed first and then painted, which allows for more paint film than can be achieved with roll form that must be shaped after finishing. Your Marvin clad products will retain their color, gloss and beauty for years to come.



\* Some custom colors may not qualify for the 20-year warranty. For details, contact your local dealer. For complete warranty information, see [marvinwindows.com/warranty](http://marvinwindows.com/warranty).







## MARVIN EXTERIOR FINISHES

IT TAKES A CERTAIN TYPE OF PERSON  
TO PUT UP WITH HARSH COASTAL WEATHER.  
IT TAKES A CERTAIN TYPE OF WINDOW, TOO.

### 19 STANDARD COLORS

Actually, there's absolutely nothing standard about these finishes. Marvin's extruded aluminum exterior cladding meets AAMA 2605, meaning it's as beautiful as it is durable. Marvin® uses this exceptionally durable, low-maintenance, high-quality extruded aluminum cladding as standard on our clad products. With such a high-performing finish, we have offered a 20-year coastal warranty against chalking or fading according to the AAMA specification.



### ANY COLOR YOU WANT

#### MARVIN CUSTOM COLORS

Through Marvin's Any Color You Want program we can apply whatever color inspires you to your very own one-of-a-kind custom clad. So go ahead; pick a color, any color.\*

### ALL WOOD EXTERIOR

Marvin wood windows offer select, stable species that combine optimal performance with the distinctive grain, texture and beauty of natural wood. Vertical Grain Douglas Fir and Mahogany, known for their superior durability, provide high resistance to decay and offer minimal shrinkage. An optimum choice for coastal residents.



\* Some custom colors may not qualify for the 20-year warranty. For details, contact your local dealer. For complete warranty information, see [marvin.com/warranty](http://marvin.com/warranty).







## MARVIN INTERIOR FINISHES

# INTERIOR WOODS AND FINISHES THAT LIVE UP TO THE AMAZING VIEWS THEY FRAME.

### MARVIN WOOD OPTIONS

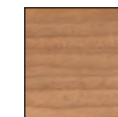
Marvin® makes it easy to complement any project or design with an array of high-quality standard wood options, including Pine, Douglas Fir, Vertical Grain Douglas Fir, White Oak, Cherry and Mahogany. Should your project require a more customized, one-of-a-kind look, Marvin offers many beautiful and unique species including Maple, Black Walnut and Western Red Cedar.



Pine



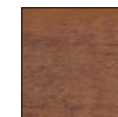
White Oak



Cherry



Douglas Fir



Mahogany



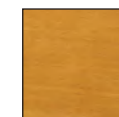
Vertical Grain  
Douglas Fir

### MARVIN FINISH OPTIONS

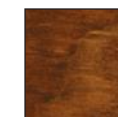
Begin with the ideal finish. Marvin factory-applied interior finishes bring out the natural grain and texture of your wood windows and doors, and save you the time and hassle of staining. With six rich and deep stains, plus a clear coat, Primed White, White or Black painted interior finish, wood windows and doors have never looked this good.



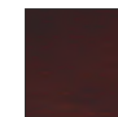
Wheat



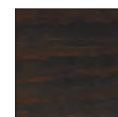
Honey



Hazelnut



Cabernet



Espresso



Leather



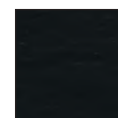
Clear Coat



Primed White



White

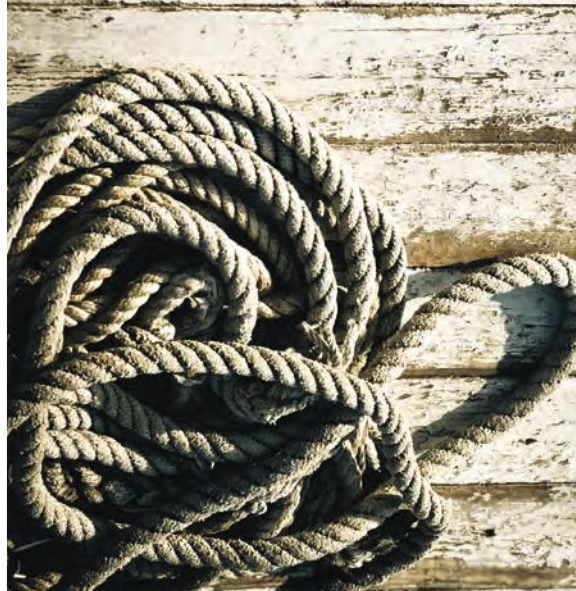


Designer  
Black

Note: Finish colors are shown on Pine. To see all of the beautiful finishes visit [Marvin.com](http://Marvin.com).







## MARVIN COASTAL HARDWARE

# THE FINISHING TOUCHES. BEAUTIFULLY FINISHED.

### MARVIN HARDWARE OPTIONS

Marvin® Windows and Doors' durable, elegant hardware is engineered to work seamlessly with our windows and doors. For increased protection, customers have the option of PVD (Physical Vapor Deposition) hardware for swinging and sliding doors. This state-of-the-art finish resists fading and discoloration due to sunlight, humidity, and other coastal conditions.



\* Available with PVD.



### HARDWARE



Sash Lock



Swinging French



Sliding French



Keyed Sash Lock



Folding Handle



Butt Hinge



Adjustable Hinge

### ARCHITECTURAL HARDWARE



Ashley Norton



Baldwin



Bouvet®



Rocky Mountain

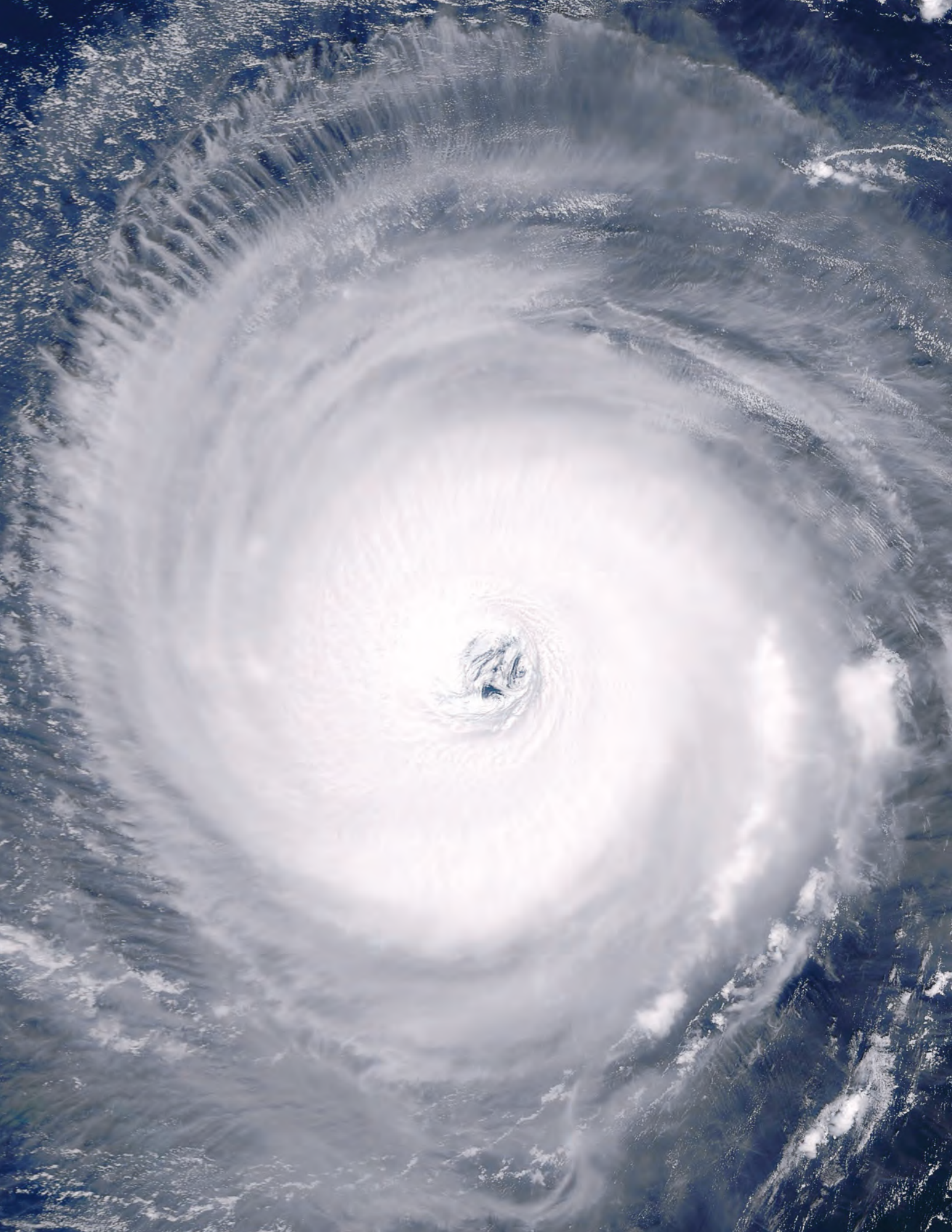


Valli&Valli

Note: Certain hardware is available in PVD finish for increased protection against harsh coastal weather and conditions.







“



*When you live in the Northeastern Caribbean like we do, specifically on Anguilla, it is not a question of if you will have a hurricane but only when you will have one and how strong it will be. Having owned other property in the Islands since 1988 and dealt with the shutter nightmare with each passing storm we decided that our new home on Anguilla would have a very different type of protection. We began construction of our ocean front villa in July of 2004 and completed construction in January of 2006. After looking at many window and door options, we decided to go with Marvin® impact windows and doors. As we sat safely in our home on August 30, 2010 as the eye of Hurricane Earl passed directly over us with Cat 3 winds, our decision was totally justified. It was eerie, we watched the ocean waves crash below us but yet we heard virtually no noise even though the winds were sustained at 120 MPH with higher gusts. Needless to say, we had not one penny of damage. Investing in Marvin impact products proved to be worth every penny, just from this one event.*

”

*— Jim & Robin D.,  
Anguilla*

Note: StormPlus products are designed to help preserve a home's structural integrity during intense pressure cycling. No window or door provides absolute protection against every weather event.



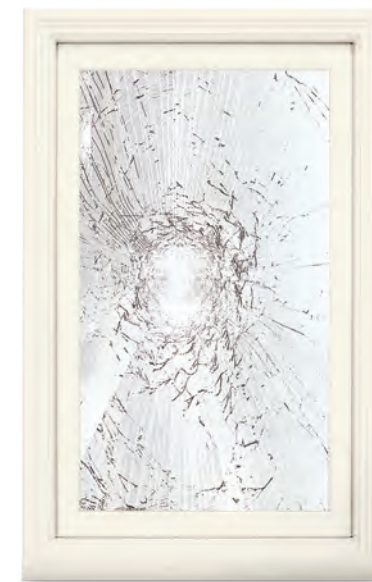


## THE STORMPLUS DIFFERENCE

# TESTED, TWEAKED AND TESTED AGAIN. BECAUSE WINDOWS ONLY GET ONE CHANCE TO PASS THE HURRICANE TEST.

### IMPACT TESTED FOR WHATEVER STORMS THROW AT YOU.

Marvin® Windows and Doors' StormPlus products are designed, tested and certified for energy efficiency, driving rain, impact resistance and cyclic pressure.



- 1 TEST PREPARATION AND IMPACT SIMULATION:**  
The product is installed in a test wall and an 8' 2"x 4" stud is launched from an air cannon at speeds of 50 feet per second. Some codes require the product to withstand impacts to the window's center and corner.
- 2 EXAMINATION:**  
After impact, the glass is checked for holes and rips that exceed certification criteria. The glass will shatter, but its laminated layers must preserve the product's structural integrity.
- 3 PRESSURE CYCLING:**  
The StormPlus window or door undergoes persistent pressure cycling tests. A cycling test simulates the intense pushing and pulling forces of hurricane winds.

### REINFORCED SASH, FRAME, AND LOCKING POINTS REINFORCE YOUR FEELING OF CONFIDENCE.

During a hurricane, a home's seal can be breached through a broken window or door, allowing water and wind to enter, causing an increase in pressure that can lift the roof and push the walls outward. StormPlus offers increased protection from these potentially damaging pushing and pulling pressures with features that include multi-layer laminated glass (protection against flying debris), reinforced sash, frame and multi-point lock system, and unobtrusive hardware reinforcements.

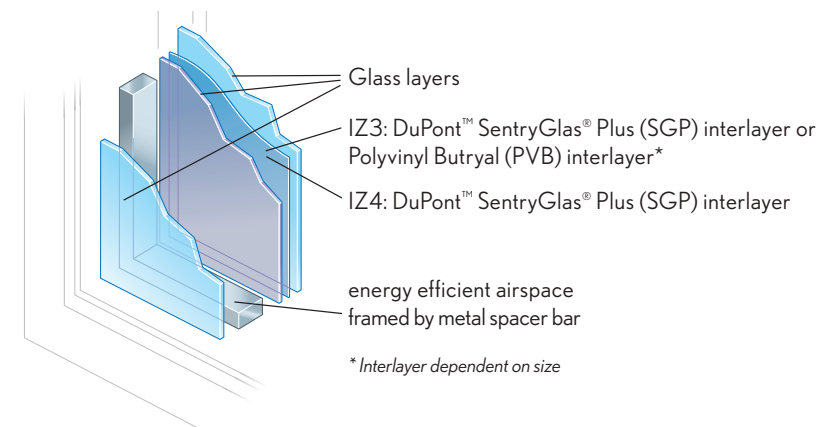






## STORMPLUS IMPACT ZONES

WE STAND FULLY BEHIND OUR WINDOWS,  
EVEN WHEN A NASTY STORM IS ROLLING IN.



### IMPACT ZONE 3

Meets International Building Codes for coastal areas in Atlantic and Gulf Coast states.

- Withstands winds from 120 mph to 140 mph
- Stands up to wind-borne debris test: 8' long 2"x 4" stud shot at 50' per second
- Extensive +/- pressure testing (9000 cycles)



### IMPACT ZONE 4

Meets International Building Codes for Florida Counties of Miami-Dade, Broward and Monroe.

- Withstands winds greater than 140 mph
- Stands up to wind-borne debris test: 8' long 2"x 4" stud shot at 50' per second, multiple times
- Extensive +/- pressure testing (9000 cycles)

### STORMPLUS PRODUCT CERTIFICATION

Marvin® impact zone products are certified by the Window and Door Manufacturers Association (WDMA) and Texas Department of Insurance (TDI). StormPlus product samples are independently tested to ASTM standards and TAS (201, 202, 203) protocols, and listed on the Florida product approval websites as well as the TDI website. To learn more, go to [Marvin.com/Stormplus](https://www.marvin.com/stormplus).









STORMPLUS® PRODUCTS

	<b>ULTIMATE CASEMENT AND ULTIMATE AWNING</b> Our innovative, high-performing Casement Window offers a variety of customization, expert craftsmanship and superior value. Also available in a Round Top style. IZ3 and IZ4 certified.
	<b>ULTIMATE DOUBLE HUNG NEXT GENERATION (CLAD ONLY)</b> A contemporary classic. Influenced by the rich, historical significance of this window style and inspired by innovative design. Featuring superior weather performance including LC-PG50 on most sizes and IZ3 certified coastal options. Available in expansive sizes up to 5' wide by 10' high.
	<b>ULTIMATE DOUBLE HUNG (WOOD ONLY)</b> Advanced engineering and the high-quality construction of our Ultimate Double Hung Window make it incredibly durable, versatile and easy-to-use. An all wood exterior and interior bring beautiful and classic style to your project. Also available in a Round Top style. IZ3 certified.
	<b>ULTIMATE MAGNUM DOUBLE HUNG</b> Designed for large residential openings, commercial applications and historic renovations, the Ultimate Magnum Double Hung is available in sizes as large as 5 feet x 10 feet. IZ3 certified.
	<b>DIRECT GLAZE WINDOW</b> Unique geometric shapes and beautifully arched round tops, Marvin® Direct Glaze Windows add dimension and drama to your project. Choose from numerous shapes and curves to create your ideal window. Certified for IZ3 or IZ4 depending on the window specifications.

STORMPLUS® PRODUCTS

	<b>ULTIMATE SWINGING FRENCH DOOR</b> The Ultimate Swinging French door is a modern classic. Superior in fit and finish, these doors combine traditional design and expert craftsmanship in a variety of design combinations that complement any space. Certified for IZ3 or IZ4 depending on the specifications of your door.
	<b>ULTIMATE SLIDING FRENCH DOOR</b> The elegant look of a traditional French door with a space-saving sliding design. You can feel the superior quality in the substantial wood and nearly effortless operation of this door. IZ3 certified.
	<b>ULTIMATE MULTI-SLIDE DOOR</b> The Ultimate Multi-Slide Door from Marvin® is more than just a new panoramic door. It's an entirely new lifestyle. Smoothly slide it open and invite into your home expansive views, fresh air and an abundance of warm, natural light. IZ3 Certified.
	<b>MULL OPTIONS</b> Dramatic ocean views are often created by grouping StormPlus windows in an assembly, sometimes joining them both horizontally and vertically. The space between the windows where they are joined together is called a mull. Mulling options for Marvin® IZ3 Ultimate Casement Windows and Ultimate Double Hung Windows with frame-to-frame mulling configurations are WDMA certified in most sizes.







## COMMERCIAL APPLICATIONS

# THE EASY COMMERCIAL-GRADE CHOICE FOR MEETING THE TOUGHEST COASTAL CODES.

StormPlus windows and doors come in a range of commercial-grade styles and sizes for projects of all types, from libraries to lodges to places of worship. And building professionals working on commercial projects benefit from our full-service, full-support approach. Expect efficient quoting, fast in-house prototyping services, helpful project management and exceptional custom capabilities. We're here to help you stand up to Mother Nature with products that perform to the highest standards.



“

*Marvin stands behind their products in ways a premier builder can trust. We have not had any recent direct hits in the Tampa area, which makes some of our customers wonder if they need this much window protection. I tell them to purchase Marvin StormPlus. Owners never think it's worth it until after the hurricane.*

”

*—Rick Hopkins, Manager, Window Classics,  
Tampa, Florida*



WINDOWS BEST USED IN HOMES  
WITH AN ENVIRONMENTAL VIEW AND  
AN ECOLOGICAL OUTLOOK.



Marvin® Windows and Doors is committed to bringing you products of the highest quality and value. Our made-to-order manufacturing philosophy is one example of our commitment.

- Marvin’s stainless steel hardware, hardware with physical vapor deposition (“PVD”), and other specifically-designed “coastal” hardware finishes as well as our standard exterior cladding finish installed in coastal environments (within one (1) mile of a sea coast or other salt water source) is warranted against manufacturing defects resulting in abnormal deterioration of the finish for ten (10) years from the original date of purchase.
- Marvin’s standard exterior cladding finish is warranted against manufacturing defects resulting in chalk and fade for twenty (20) years from the original date of purchase, and against abnormal deterioration caused by corrosion and/or loss of adhesion for ten (10) years from the original date of purchase.
- Non-coastal hardware and anodized or other specialty finishes are not recommended and are not warranted in coastal environments. To view product-specific care instructions and complete warranty information, go to [Marvin.com/care](http://Marvin.com/care) and [Marvin.com/warranty](http://Marvin.com/warranty).

BUILDING GREEN



THE “TURTLE CODE”

Many StormPlus products can be specified with Low E2 to meet Sea Turtle Conservation Codes, which help to reduce the light and reflection that can confuse sea turtle hatchlings. Thanks to this code, hatchlings get less disoriented and are more likely to find their way to the sea.



ENERGY EFFICIENCY

StormPlus products meet ENERGY STAR® qualifications in all four regions, thanks to attributes like our abundant use of wood, a natural insulator, as well as high performance glass such as our Low E2 or Low E3 glass, which reduces cooling costs by controlling solar heat gain.



LEED CERTIFICATION

StormPlus products can help projects earn credits toward LEED® certification (Leadership in Energy and Environmental Design), the premier standard for environmentally sustainable construction. Marvin is an active member of the U.S. Green Building Council and numerous other green building organizations.



ULTIMATE CASEMENT AND AWNING

IMPACT ZONE 3			
Product	Max Size	DP	Operation
CUCA	CN3697	+65 / -65	LH, RH
CUCA STAT/PICT	CN60108**	+65 / -65	FIXED
CUCA STAT/PICT	CN10860	+65 / -65	FIXED
CUCA STAT/PICT	CN7278*	+65 / -65	FIXED
CUCA STAT/PICT	CN7872	+65 / -65	FIXED
CUCA STAT/POLY	60" X 106 5/8"	+65 / -65	FIXED
CUCA STAT/POLY	72 5/8" X 77 1/8"	+65 / -65	FIXED
CUPCA	CN3684	+65 / -65	LH/RH
CUPCA STAT/PICT	CN60108**	+65 / -65	FIXED
CUPCA STAT/PICT	CN10860	+65 / -65	FIXED
CUPCA STAT/PICT	CN7278*	+65 / -65	FIXED
CUPCA STAT/PICT	CN7872	+65 / -65	FIXED
CUCART	CN3684	+65 / -65	LH, RH
CUCART STAT/PICT	CN3684	+65 / -65	FIXED
CUCART STAT/PICT	CN7278	+65 / -65	FIXED
CUAWN	CN4854	+65 / -65	OPERABLE
CUPAWN	CN7236	+65 / -65	OPERABLE
WUCA	CN3697	+65 / -65	LH, RH
WUCA STAT/PICT	CN60108**	+65 / -65	FIXED
WUCA STAT/PICT	CN10860	+65 / -65	FIXED
WUCA STAT/PICT	CN7278*	+65 / -65	FIXED
WUCA STAT/PICT	CN7872	+65 / -65	FIXED
WUCA STAT/POLY	60" X 107 9/16"	+65 / -65	FIXED
WUCA STAT/POLY	72 5/8" X 77 1/8"	+65 / -65	FIXED
WUCART	CN3684	+65 / -65	LH, RH
WUCART STAT/PICT	CN3684	+65 / -65	FIXED
WUCART STAT/PICT	CN3684	+65 / -65	FIXED
WUAWN	CN4854	+65 / -65	OPERABLE

IMPACT ZONE 4			
Product	Max Size	DP	Operation
CUCA F.S.	36" X 91 1/8"	+70 / -85	LH, RH
CUCA STAT 3/4" IG F.S.	36" X 91 1/8"	+70 / -85	FIXED
CUCA STAT 3/4" IG F.S.	91 1/8" X 36"	+70 / -85	FIXED
CUCA STAT PICT 1" IG F.S.	60" X 108"	+70 / -75	FIXED
CUCA STAT PICT 1" IG F.S.	108" X 60"	+70 / -75	FIXED
CUCA STAT PICT 1" IG F.S.	72" X 71 1/8"	+70 / -75	FIXED
CUCA STAT PICT 1" IG F.S.	71 1/8" X 72"	+70 / -75	FIXED
CUCA STAT/POLY	60" X 108"	+70 / -75	FIXED
CUCA STAT/POLY	72" X 71 1/8"	+70 / -75	FIXED
CUCART IN-SASH F.S.	60" X 108"	+70 / -75	FIXED
CUCART IN-SASH F.S.	108" X 60"	+70 / -75	FIXED
CUAWN F.S.	48" X 47 1/8"	+70 / -85	OPERABLE

DIRECT GLAZE

IMPACT ZONE 3			
Product	Max Size	DP	Operation
CDG F.S.	73" X 73"	+55 / -65	FIXED
CDG F.S.	48" X 120"	+55 / -65	FIXED
CDG F.S.	120" X 48"	+55 / -65	FIXED
WDG F.S.	73" X 73"	+55 / -65	FIXED

IMPACT ZONE 4			
Product	Max Size	DP	Operation
CDG F.S.	60" X 120"	+70 / -75	FIXED
CDG F.S.	120" X 60"	+70 / -75	FIXED
CDG F.S.	36" X 96"	+95 / -95	FIXED
CDG F.S.	96" X 36"	+95 / -95	FIXED

ULTIMATE DOUBLE HUNG  
NEXT GENERATION

IMPACT ZONE 3			
Product	Max Size	DP	Operation
CUDH-NG	CN4450	+65 / -65	DH, SH
CUDHP-NG F.S.	61 1/4" X 102"	+65 / -65	FIXED
CUDHT-NG	CN6820	+65 / -65	FIXED
CUDHRT-NG	CN4450	+65 / -65	DH, SH

ULTIMATE DOUBLE HUNG

IMPACT ZONE 3			
Product	Max Size	DP	Operation
WUDH	CN3234	+50 / -65	DH, SH
WUDH	CN4026	+55 / -65	DH, SH
WUDH RT	CN3234	+50 / -65	DH, SH
WUDHT	73 3/8" X 27 3/8"	+55 / -65	FIXED
WUDHP	CN6878	+55 / -65	FIXED
WUDHP	CN60108	+55 / -65	DH, SH

IMPACT ZONE 3 (MAGNUM)			
Product	Max Size	DP	Operation
UDHM	CN4848	+50 / -65	DH
UDHM	CN4256	+50 / -65	DH

ULTIMATE SWINGING FRENCH DOOR

IMPACT ZONE 3 (OUTSWING)			
Product	Max Size	DP	Operation
CUOFD	CN3080	+55 / -65	O, X
CUOFD	CN6080	+55 / -65	OX, XO, XX
CUOFS	CN1680	+55 / -65	FIXED
CUOFT	CN6026	+55 / -65	FIXED
WUOFD	CN3080	+55 / -65	O, X
WUOFD	CN6080	+55 / -65	OX, XO, XX
WUOFS	CN1680	+55 / -65	FIXED
WUOFT	CN6026	+55 / -65	FIXED

IMPACT ZONE 3 (INSWING)			
Product	Max Size	DP	Operation
CUIFD	CN3080	+50 / -65	O, X
CUIFD	CN6080	+50 / -65	OX, XO, XX
CUIFS	CN1680	+55 / -65	FIXED
CUIFT	CN6026	+55 / -65	FIXED
WUIFD	CN3080	+50 / -65	O, X
WUIFD	CN6080	+50 / -65	OX, XO, XX
WUIFS	CN1680	+55 / -65	FIXED
WUIFT	CN6026	+55 / -65	FIXED

IMPACT ZONE 4 (OUTSWING)***			
Product	Max Size	DP	Operation
CUOFD	CN3080	+65 / -80	O, X
CUOFD	CN3068	+65 / -80	O, X
CUOFD	CN6080	+65 / -80	XX
CUOFD	CN6068	+65 / -80	XX

ULTIMATE SLIDING FRENCH DOOR

IMPACT ZONE 3			
Product	Max Size	DP	Operation
CUSFD	CN8080	+50 / -65	OX, XO
CUSFD	CN12080	+55 / -65	OXO, OOX, XOO
CUSFD	CN16080	+50 / -55	OXO, X
CUSFT	CN8026	+55 / -65	FIXED
WUSFD	CN8080	+55 / -65	OX, XO
WUSFT	CN8026	+55 / -65	FIXED

2 1/4" ULTIMATE SWINGING  
FRENCH DOOR

IMPACT ZONE 3 (OUTSWING)			
Product	Max Size	DP	Operation
CMOFD	CN3080	+55 / -65	O, X
CMOFD	CN6080	+55 / -65	XX
CMOFD	CN30100	+55 / -65	O, X
CMOFD	CN60100	+55 / -65	XX
CMOAF	CN3080	+55 / -65	O, X
CMOAF	CN6080	+55 / -65	XX
CMOAF	CN30100	+55 / -65	O, X
CMOAF	CN60100	+55 / -65	XX
WMOFD	CN3080	+55 / -65	O, X
WMOFD	CN6080	+55 / -65	XX
WMOFD	CN30100	+55 / -65	O, X
WMOFD	CN60100	+55 / -65	XX
WMOAF	CN3080	+55 / -65	O, X
WMOAF	CN6080	+55 / -65	XX
WMOAF	CN30100	+55 / -65	O, X
WMOAF	CN60100	+55 / -65	XX

IMPACT ZONE 3 (INSWING)			
Product	Max Size	DP	Operation
CMIFD	CN3080	+50 / -65	O, X
CMIFD	CN6080	+50 / -65	XX
CMIFD	CN30100	+50 / -65	O, X
CMIFD	CN60100	+50 / -65	XX
CMIAF	CN3080	+50 / -65	O, X
CMIAF	CN6080	+50 / -65	XX
CMIAF	CN30100	+50 / -65	O, X
CMIAF	CN60100	+50 / -65	XX
WMIFD	CN3080	+50 / -65	O, X
WMIFD	CN6080	+50 / -65	XX
WMIFD	CN30100	+50 / -65	O, X
WMIFD	CN60100	+50 / -65	XX
WMIAF	CN3080	+50 / -65	O, X
WMIAF	CN6080	+50 / -65	XX
WMIAF	CN30100	+50 / -65	O, X
WMIAF	CN60100	+50 / -65	XX

IMPACT ZONE 4 (OUTSWING)***			
Product	Max Size	DP	Operation
CMOFD	CN3080	+65 / -70	O, X
CMOFD	CN6080	+65 / -70	XX
CMOFD	CN30100	+65 / -70	O, X
CMOFD	CN60100	+65 / -70	XX
CMOAF	CN3080	+65 / -70	O, X
CMOAF	CN6080	+65 / -70	XX
CMOAF	CN30100	+65 / -70	O, X
CMOAF	CN60100	+65 / -70	XX

ULTIMATE MULTI-SLIDE DOOR

IMPACT ZONE 3		
Product	Max Size	DP
BI-PARTING	CN HEIGHTS ABOVE 8-0 TO 10-0	+50 / -55†
Stacked or Pocket with High Performance Sill	CN HEIGHTS 8-0 AND UNDER Up to 10 Panels and Up to 4-0 Panel Width	+55 / -65†
UNI-DIRECTIONAL	CN HEIGHTS UP TO 10-0	+55 / -65†
Stacked or Pocket with High Performance Sill	Up to 6 Panels and Up to 4-0 Panel Width	

F.S. refers to frame size.  
\* Certified width 72 5/8" for use with Marvin® Doors.  
\*\* Certified height 107 1/2" (frame size).  
\*\*\* Includes stamped and milled panels.  
† Talk to your Marvin Rep about available configurations.





## MARVIN COASTAL COMPLETE WINDOWS AND DOORS

Beauty without sacrificing performance. This is the Marvin® Coastal Complete promise. And it is the reason why living on the coast is even more beautiful. Find a dealer near you at [marvin.com](http://marvin.com).



©2017 Marvin Windows and Doors. All rights reserved. ®Registered trademark of Marvin Windows and Doors. Part #19980676. April 2017.